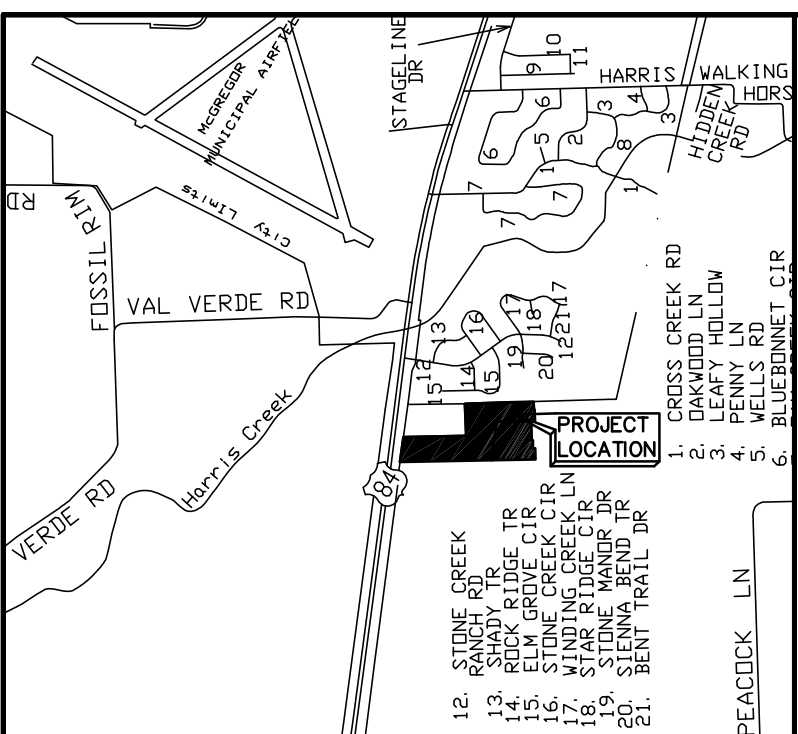
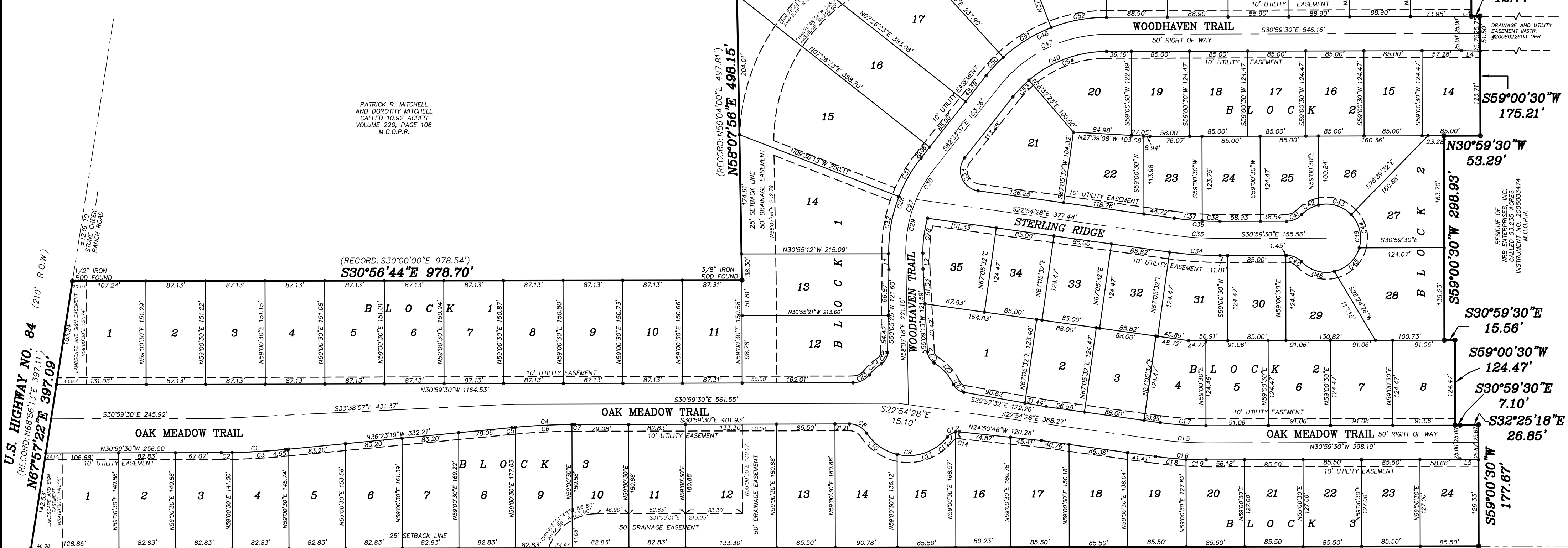


**Amended Final Plat Of
TRAILS OF OAKRIDGE ADDITION, PHASE ONE, to the City of Waco,
McLennan County, Texas, being a subdivision of 30.85 acres out of
the Lorenzo Bragg Survey, Abstract Number 101, in McLennan
County, Texas.**

THIS SURVEY WAS CONDUCTED BY GLOBAL POSITIONING SYSTEM (GPS) AND BEARINGS ARE REFERENCED TO GEODETIC NORTH.
● = 1/2" IRON RODS TO BE PLACED AT ALL CORNERS AFTER FINAL ROAD AND UTILITY CONSTRUCTION UNLESS OTHERWISE NOTED



This tract does not appear to be within the flood zone per Federal Insurance Rate Map panel number 480456 0140 B, Dated: September 2, 1981.



U.S. HIGHWAY NO. 84 (210' R.O.W.)
RECORD: N68°56'13"E 397.11'
N67°57'22"E 397.09'

Texas Grid Coordinates:
N=10511934.02
E=3233720.46
(Coordinates Furnished by the City of Waco Engineering Department.)

GILBERT L. WETHORN AND WIFE, VELMA L. WETHORN CALLED 25.27 ACRES VOLUME 1680, PAGE 793 M.C.O.P.R.

Texas Grid Coordinates:
N=10509361.05
E=3233377.68
(Coordinates Furnished by the City of Waco Engineering Department.)

GILBERT LOUIS WETHORN TRUST TRACT ONE: FIRST TRACT CALLED 134.75 ACRES M.C.C. 2003026653 M.C.O.P.R.

LINE	BEARING	LENGTH
L1	N51°07'18"E	23.24'
L2	N58°07'18"E	23.07'
L3	N32°33'20"W	14.96'
L4	S29°26'04"E	27.73'
L5	N29°33'43"W	26.85'

CURVE	CHORD	DIST.	LENGTH	RADIUS
C1	S33°41'25"E	94.16'	94.19'	1000.00'
C2	S31°26'35"E	15.76'	15.76'	1000.00'
C3	S34°08'30"E	78.42'	78.44'	1000.00'
C4	N33°41'25"W	91.80'	91.84'	975.00'
C5	N36°14'15"W	5.14'	5.14'	975.00'
C6	N33°38'58"W	82.92'	82.94'	975.00'
C7	N31°06'07"W	3.75'	3.75'	975.00'
C8	N02°34'02"W	29.56'	29.77'	38.00'
C9	S28°09'32"E	118.15'	137.66'	73.00'
C10	S04°02'24"W	54.28'	55.61'	73.00'
C11	S49°59'00"E	77.80'	82.05'	73.00'
C12	N53°30'52"W	19.19'	20.01'	20.00'
C13	N61°50'11"W	13.91'	14.20'	20.00'
C14	N33°10'06"W	5.79'	5.81'	20.00'
C15	S26°56'59"E	70.49'	70.55'	500.00'
C16	S26°56'59"E	74.01'	74.07'	525.00'
C17	S26°56'59"E	66.96'	67.02'	475.00'
C18	S29°20'56"E	44.72'	44.74'	525.00'
C19	S29°23'27"E	29.33'	29.34'	525.00'
C20	S06°33'16"W	18.48'	19.21'	20.00'
C21	N17°02'58"E	42.75'	43.38'	73.00'
C22	S28°05'20"W	18.82'	19.59'	20.00'
C23	S56°53'44"E	26.21'	27.13'	30.00'
C24	N73°17'52"W	24.10'	24.21'	73.00'
C25	N88°08'49"E	18.81'	19.59'	20.00'
C26	S77°46'45"W	148.04'	150.98'	220.00'
C27	S77°46'45"W	131.21'	133.82'	195.00'

CURVE	CHORD	DIST.	LENGTH	RADIUS
C28	S66°50'41"W	51.58'	51.78'	170.00'
C29	S70°02'38"W	80.59'	81.17'	195.00'
C30	S89°42'15"W	52.49'	52.65'	195.00'
C31	S88°55'09"W	65.19'	65.43'	220.00'
C32	S69°15'31"W	85.01'	85.55'	220.00'
C33	S37°15'57"W	52.05'	63.01'	30.00'
C34	S26°56'59"E	74.01'	74.07'	525.00'
C35	S26°56'59"E	70.49'	70.55'	500.00'
C36	S26°56'59"E	66.96'	67.02'	475.00'
C37	S25°22'35"E	40.92'	40.93'	475.00'
C38	S29°25'06"E	26.08'	26.09'	475.00'
C39	N59°00'30"E	68.75'	238.36'	50.00'
C40	N07°42'29"W	23.72'	24.38'	30.00'
C41	S54°16'32"E	23.72'	24.38'	30.00'
C42	N61°00'10"W	28.50'	28.90'	50.00'
C43	N14°26'48"W	50.00'	52.36'	50.00'
C44	N45°33'12"E	50.00'	52.36'	50.00'
C45	S74°26'48"E	50.00'	52.36'	50.00'
C46	S14°26'07"E	50.00'	52.38'	50.00'
C47	N56°46'34"W	173.99'	180.01'	200.00'
C48	N56°46'34"W	195.74'	202.51'	225.00'
C49	N56°46'34"W	152.24'	157.51'	175.00'
C50	N77°51'34"W	36.88'	36.92'	225.00'
C51	N62°37'00"W	82.33'	82.79'	225.00'
C52	N41°32'00"W	82.33'	82.79'	225.00'
C53	N77°00'37"W	33.85'	33.90'	175.00'
C54	N51°13'33"W	121.05'	123.60'	175.00'

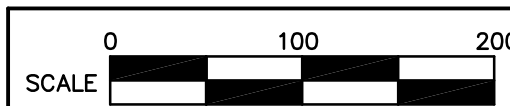
30.85 Acres
79 Lot, 3 Block
Water provided by City of Waco
Electric Service provided by ONCOR
Sewer provided by City of Waco

AMENDED SREET NAME: WOODHAVEN COURT TO STERLING RIDGE.

LETH LTD

PO Box 23414 Waco, Texas 76702 (254-776-5151)
8801 Sanger Ave. Suite 111 Waco, Texas 76712 (FAX: 254-776-5152)

E.S. NASH SURVEY
ABSTRACT NO. 686
MCLENNAN COUNTY, TEXAS



ADDRESS: U.S. HIGHWAY NO. 84 DATE: 04-14-06
WORK ORDER NO. 45243 DRAWN BY: JBM
DIGITAL FILE 45243.dwg FIELDBOOK/Pg. 183/20